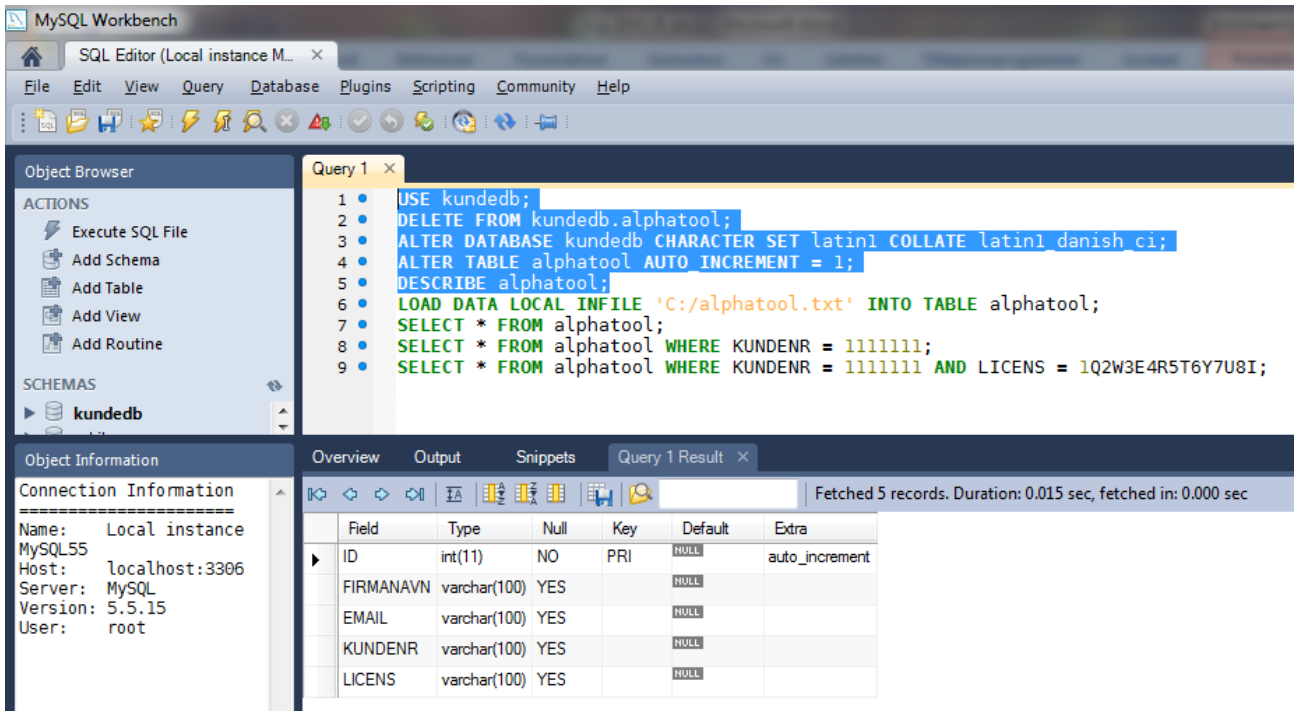
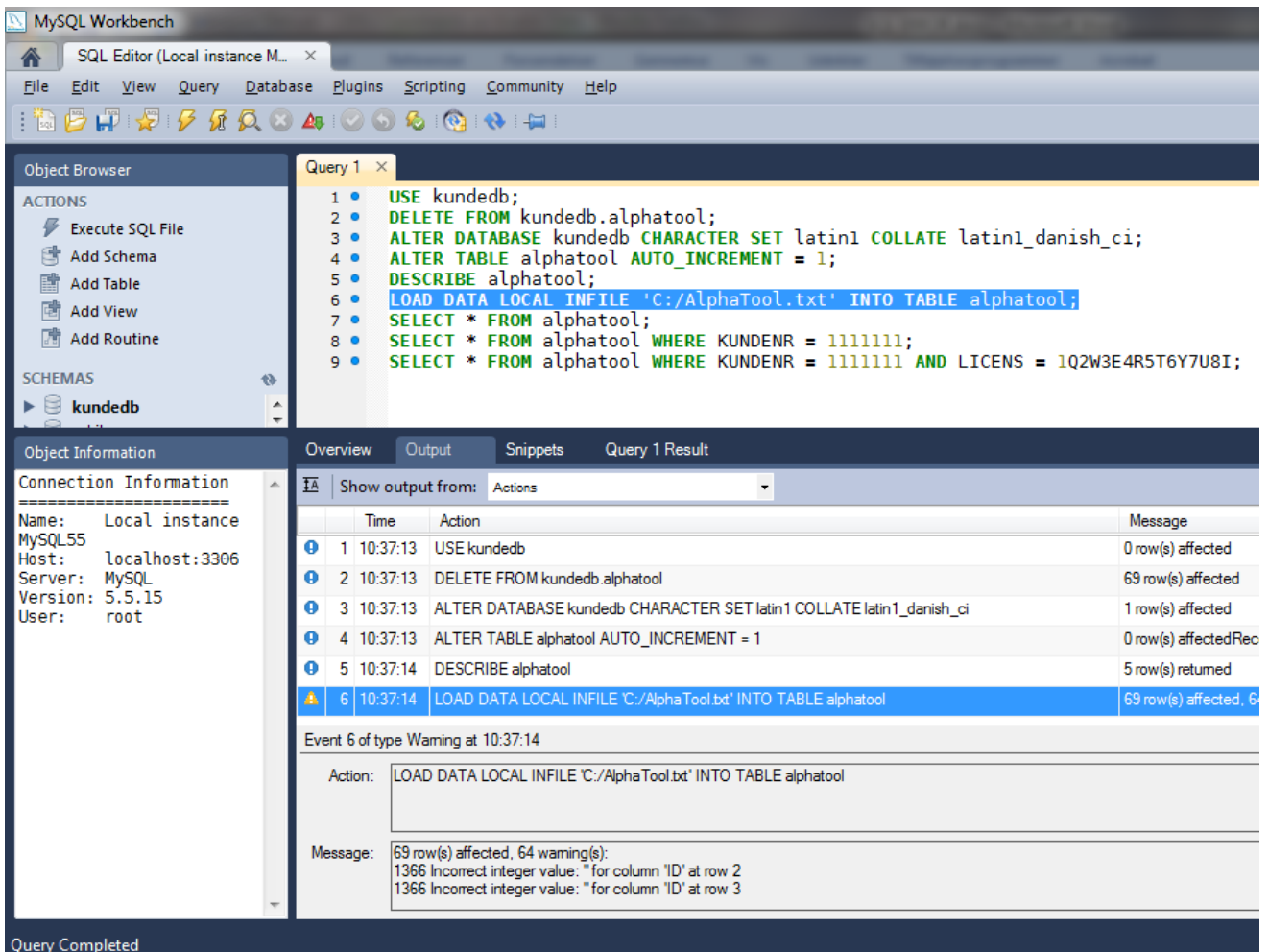


LOAD DATA & COLUMN ERROR



PREPARING DATABASE



LOAD DATA INTO DATABASE – TRIGGERS AN ERROR – BUT ALL DATA SEEMS NICELY LOADED –

SEE NEXT PAGE

LOAD DATA & COLUMN ERROR

The screenshot shows the MySQL Workbench interface. The SQL Editor window contains the following query:

```
1 USE kundedb;
2 DELETE FROM kundedb.alphanool;
3 ALTER DATABASE kundedb CHARACTER SET latin1 COLLATE latin1_danish_ci;
4 ALTER TABLE alphanool AUTO_INCREMENT = 1;
5 DESCRIBE alphanool;
6 LOAD DATA LOCAL INFILE 'C:/AlphaTool.txt' INTO TABLE alphanool;
7 SELECT * FROM alphanool;
8 SELECT * FROM alphanool WHERE KUNDENR = 1111111;
9 SELECT * FROM alphanool WHERE KUNDENR = 1111111 AND LICENS = 1Q2W3E4R5T6Y7U8I;
```

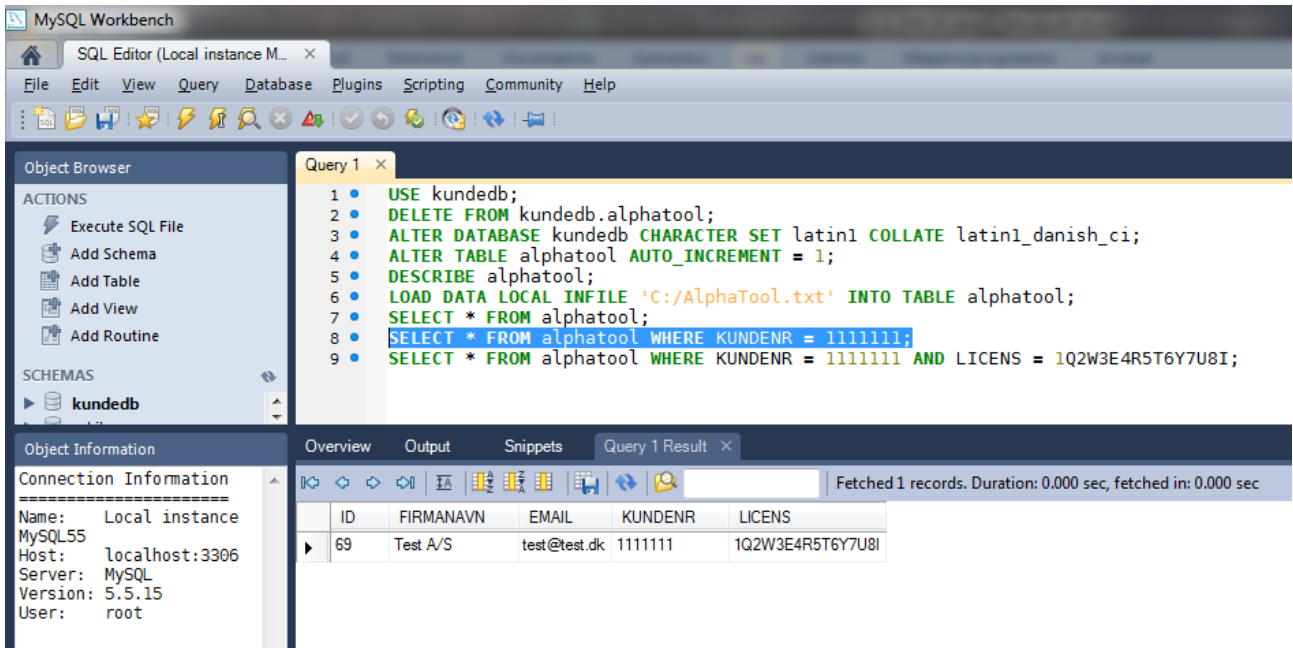
The Query Results window shows the output of the query, displaying 69 records. The columns are ID, FIRMANAVN, EMAIL, KUNDENR, and LICENS. The data is as follows:

ID	FIRMANAVN	EMAIL	KUNDENR	LICENS
1
2
3
4
5
6
7
8
9
10
11
12
13
14
15
16
17
18
19
20
21
22
23
24
25
26
27
28
29
30
31
32
33
34
35
36
37
38
39
40
41
42
43
44
45
46
47
48
49
50
51
52
53
54
55
56
57
58
59
60
61
62
63
64
65
66
67
68
69	Test A/S	test@test...	1111111	1Q2W3E4R5T6Y7U8I

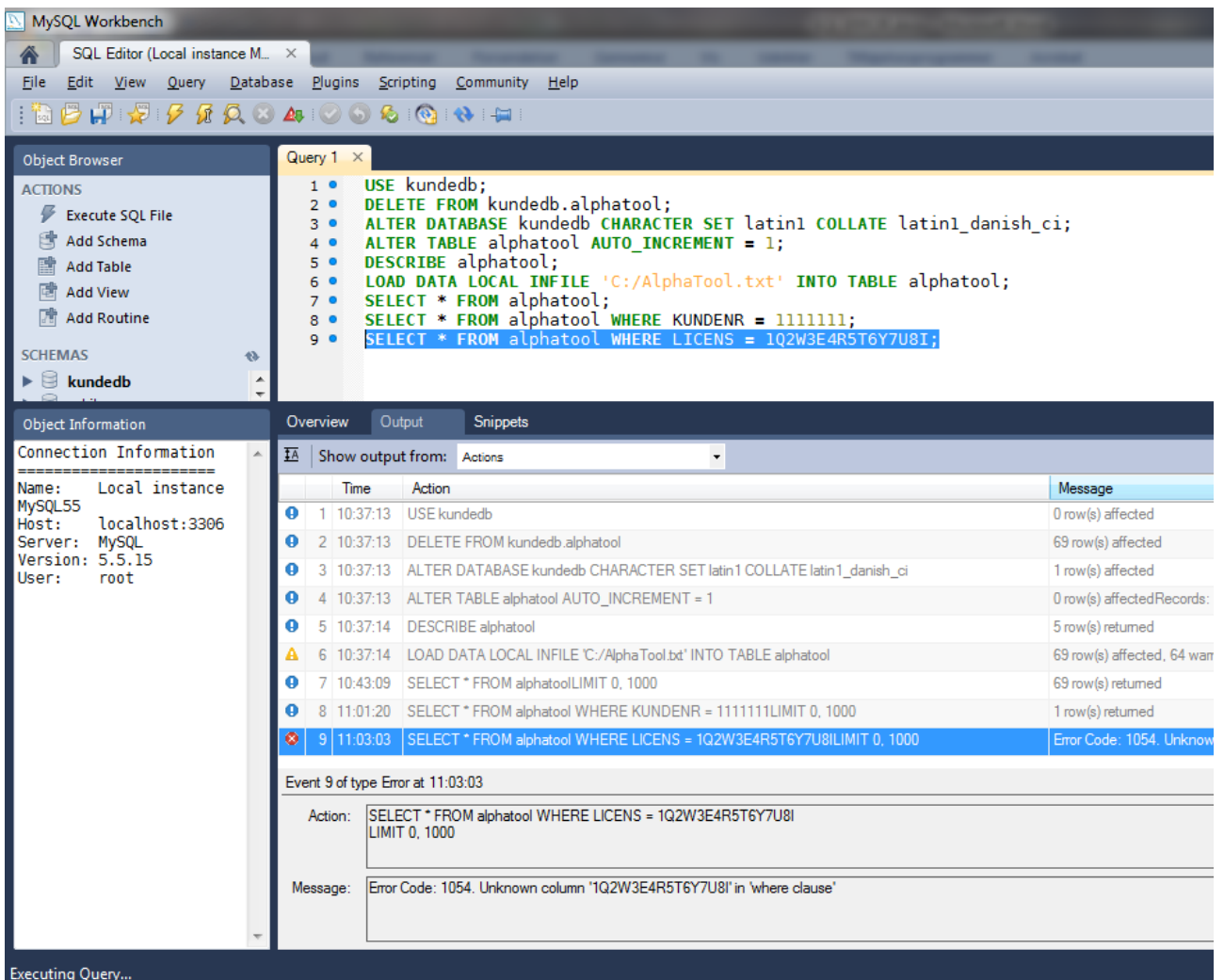
The status bar at the bottom indicates "Query Completed".

ALL DATA SEEMS NICELY LOADED

LOAD DATA & COLUMN ERROR



SELECT FROM CLOLUMN KUNDENR WORKS OK



SELECT FROM COLUMN LICENS DOES NOT WORK?????